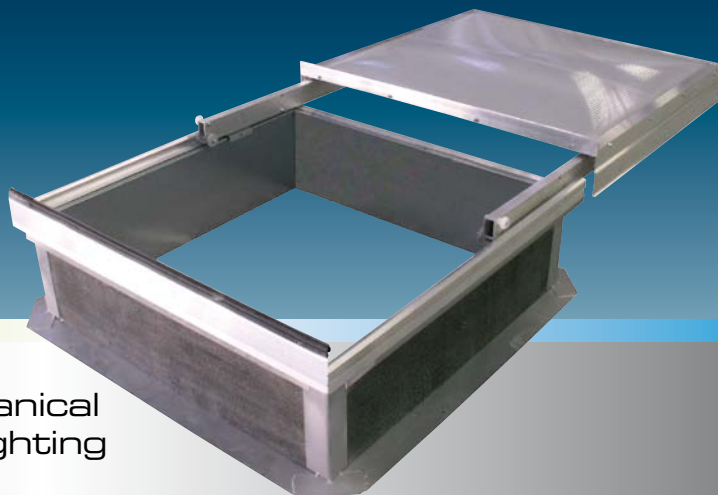


DP 350

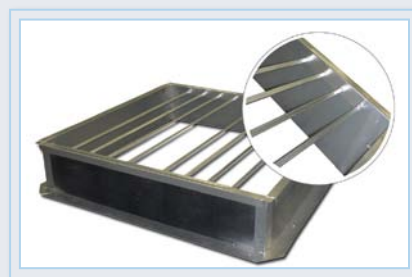


Sliding roofing access / Mechanical natural ventilation / Zenithal lighting

DESCRIPTION

The DÔME du PUY 350 type skylights are devices intended for difficult roofing access. The opening frame is entirely aluminium section and accommodates a 10 mm thick, 1200 joules OPALscent alveolar polycarbonate plate (in closed position).

They are assembled on a 300 mm metal skylight frame or wall plates in 15/10th galvanised sheet metal to accommodate bitumen sealing or for a PVC membrane (reversed insulation material), the skylight frame is insulated on its outside perimeter by 15 mm thick insulating material.



To be 1200 joules, in open position, all skylights should have security bars.



DINGFELDER + HADLER Portugal, Lda.

Av. S. Miguel, 249, Esc. 26 - 2775-751 Carcavelos
www.dh-portugal.pt

FOR TILING, SLATE OR SEALING ROOFING

M50

DP 350

Sliding roofing access / Mechanical natural ventilation / Zenithal lighting

TECHNICAL FEATURES PER SIZE

Dimensions* (in cm)	Skylight frame height (in mm)	Clearance size (in cm)	Lighting surface area (in m ²)	Maximum weight including lid (in kg)
100 x 100	300	100 x 90	0,93	49
120 x 120	300	120 x 110	1,36	58

Sizes provided for informational purposes. The manufacturer reserves the right to change his product features at any time and without notice.
*For all other sizes, please enquire.

FILLING FEATURES

Colour	Light transmission	Sound insulation (in db)	Thermal transmission coef. (U in W/m ² °K)	Fire classification	Number of partitions
Transparent	65 %	20	2,30	B-s1,D0	5
Opal	60 %	20	2,30	B-s1,D0	5
Opaque	0 %	17	3,10	/	4

Data provided for informational purposes. The manufacturer reserves the right to change the features of its products at any time and without notice.



1200 JOULES SECURITY BARS

The 1200 joules fall-arrest bars are:
20 x 20 mm square tubes treated for corrosion with a 135 mm
center distance



DINGFELDER + HADLER Portugal, Lda.

Av. S. Miguel, 249, Esc. 26 - 2775-751 Carcavelos
www.dh-portugal.pt

2CA - Z.I. DE VAUREIL 63220 ARLANC - FRANCE
PHONE: +33 (0)4 73 95 01 46 - FAX: +33 (0)4 73 95 17 04